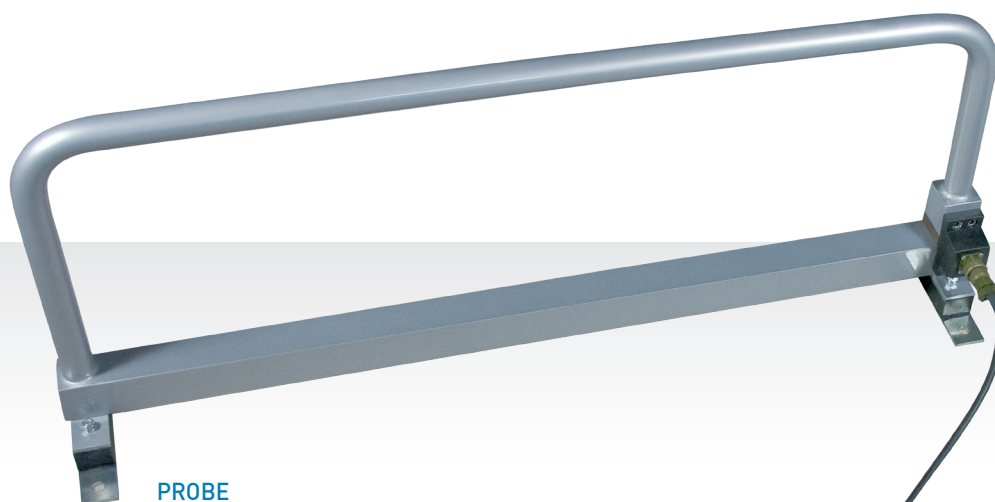


TSM-D

Tunnel Metal Detector for industrial use



PROBE

HIGH IMMUNITY
TO ENVIRONMENTAL
INTERFERENCE



VERY HIGH RELIABILITY



ELECTRONIC
CONTROL UNIT

- Detection of both magnetic and non-magnetic metals
- High immunity to environmental interference
- Installed without cutting conveyor belt
- Digital Programming
- Very high reliability
- IP65 main unit and probe



www.ceia.net

TSM-D

TUNNEL METAL DETECTOR FOR INDUSTRIAL USE

The CEIA TSM-D digital Metal Detector is suitable for intercepting magnetic and non-magnetic metal fragments of medium to large dimensions in industrial, textile, chemical, mining, foodstuffs and other products, both for quality control and machinery protection

The product to be inspected is carried on a conveyor belt through the Detector Probe, which is connected to the Electronic Control Unit.

The TSM-D Metal Detector probe unit can be opened up, thereby allowing installation on conveyor belts without cutting them.

Detection sensitivity and other operational settings can be pre-selected digitally using function keys and alphanumeric display.

The TSM-D Metal Detector features extremely robust construction, which allows its installation in difficult environments, both inside and outside, without reduction in its operational features.

Digital processing of signals guarantees the highest immunity to external electromagnetic interference.

The TSM-D Metal Detector is tested to conform to Electrical Safety and Electromagnetic Compatibility standards required for the CE mark.

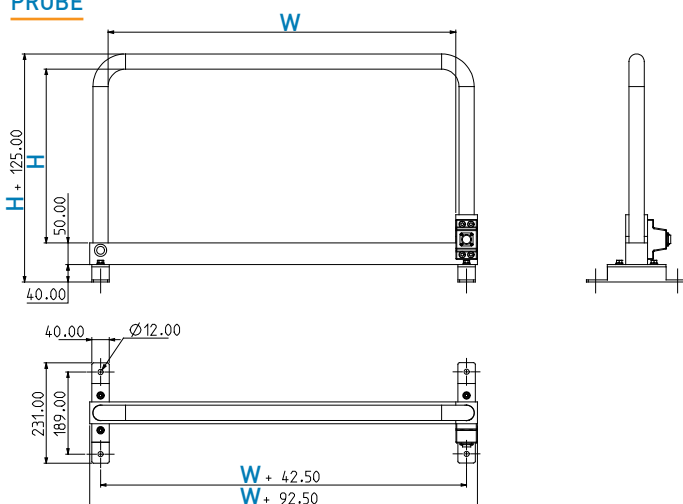
Specifications

| | |
|----------------------------|--|
| DETECTION FUNCTIONS | Adjustable sensitivity |
| | Interception speed programmable according to applications (2 to 250 m/min) |
| | Digital programming with alphanumeric display |
| | Visual and acoustical indicator |
| | Built-in self-diagnosis system |
| INPUTS / OUTPUTS | Built-in settings memory without backup battery |
| | Programmable Alarm Relay: rating 250Vac, 2.5A |
| | Encoder/Reset Input |
| POWER SUPPLY | Standard bluetooth connectivity |
| | 100-240 Vac, 50/60 Hz, 1.5A max |
| ENVIRONMENTAL REQUIREMENTS | Operating temperature: -10 to +55 °C |
| | Relative humidity: 0 -95% (without condensation) |

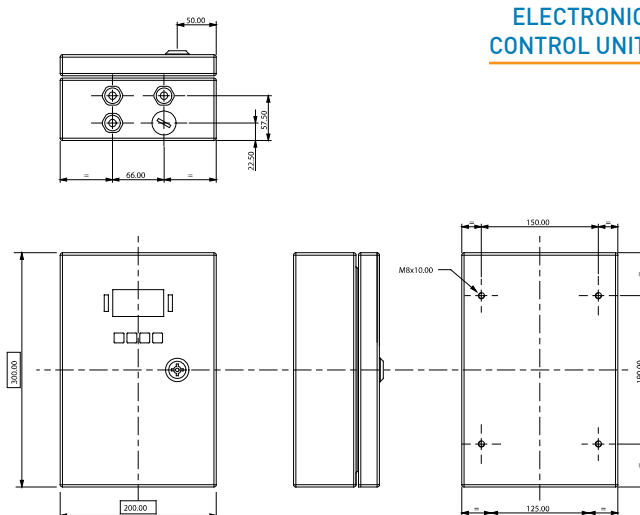
| | |
|------------------------------|--|
| APPLICATIONS | Product Quality Control and protection of machinery in the following industries: |
| | <div> <div>> Textiles</div> <div>> Chemicals</div> <div>> Foodstuffs</div> </div> <div> <div>> Concrete</div> <div>> Mining</div> <div>> Clay</div> </div> <div> <div>> Timber</div> <div>> Paper</div> </div> |
| CERTIFICATION AND CONFORMITY | Conforms and is tested to European standards required for the CE mark |
| | Complies with EC regulations and international standards relating to electrical safety and electromagnetic compatibility |
| OTHER | Dimensions of main unit and probe: see drawing and table Length of cable connecting main unit and probe: standard 3m, others on request Conforms and is tested to European Standards required for the CE mark |

Dimensions

PROBE



ELECTRONIC CONTROL UNIT



| | | |
|---|---------------------------------|------------------------------------|
| W | 500 ÷ 1500 in 100 mm increments | Dimensions of standard models (mm) |
| H | 200 ÷ 700 in 50 mm increments | Other sizes on request |



COSTRUZIONI ELETTRONICHE INDUSTRIALI AUTOMATISMI

Zona Ind.le 54/G, 52041 Vicinaggio - Arezzo (ITALY)

Phone: +39 0575 4181 Fax: +39 0575 418296 E-mail: qa-detectors@ceia-spa.com

DP014K0001v1000UK

www.ceia.net

CEIA reserves the right to make changes, at any moment and without notice, to the models (including programming), their accessories and options, to the prices and conditions of sale